

T1
Terminale

Polo	Col./Nr.	Sezione	Drass	Codice	Marcaturo
-	A	1	XL/1	SDP-0800	A

S1
Saldatura

Polo	Col./Nr.	Sezione	Drass	Codice
-	G/V	2,5	X2/3	SDP-0814
	R	1	X2/4	SDP-0818
	B	2,5	XL/5	SDP-0808

T2
Terminale

Polo	Col./Nr.	Sezione	Drass	Codice
-	B	1	XL/2	SDP-0806

PTab

None	Codice
	SDP-0812
	SDP-0813
	SDP-0800
	SDP-0814
	SDP-0818
	SDP-0806
A	SDP-0800

X1
Connettore

Polo	Col./Nr.	Sezione	Drass	Codice	Marcaturo
1	A	1	TL/-	SDP-0800	A
2	B	1	TE/-	SDP-0806	
3	G/V	1	X2/1	SDP-0812	
4	G/V	1,5	X2/2	SDP-0813	
5	B	2,5	SL/-	SDP-0808	
6	A	1	X2/5	SDP-0800	
	A	1	XL/7	SDP-0800	
7	A	1	XL/6	SDP-0800	
PE					

Tabella distinta materiali

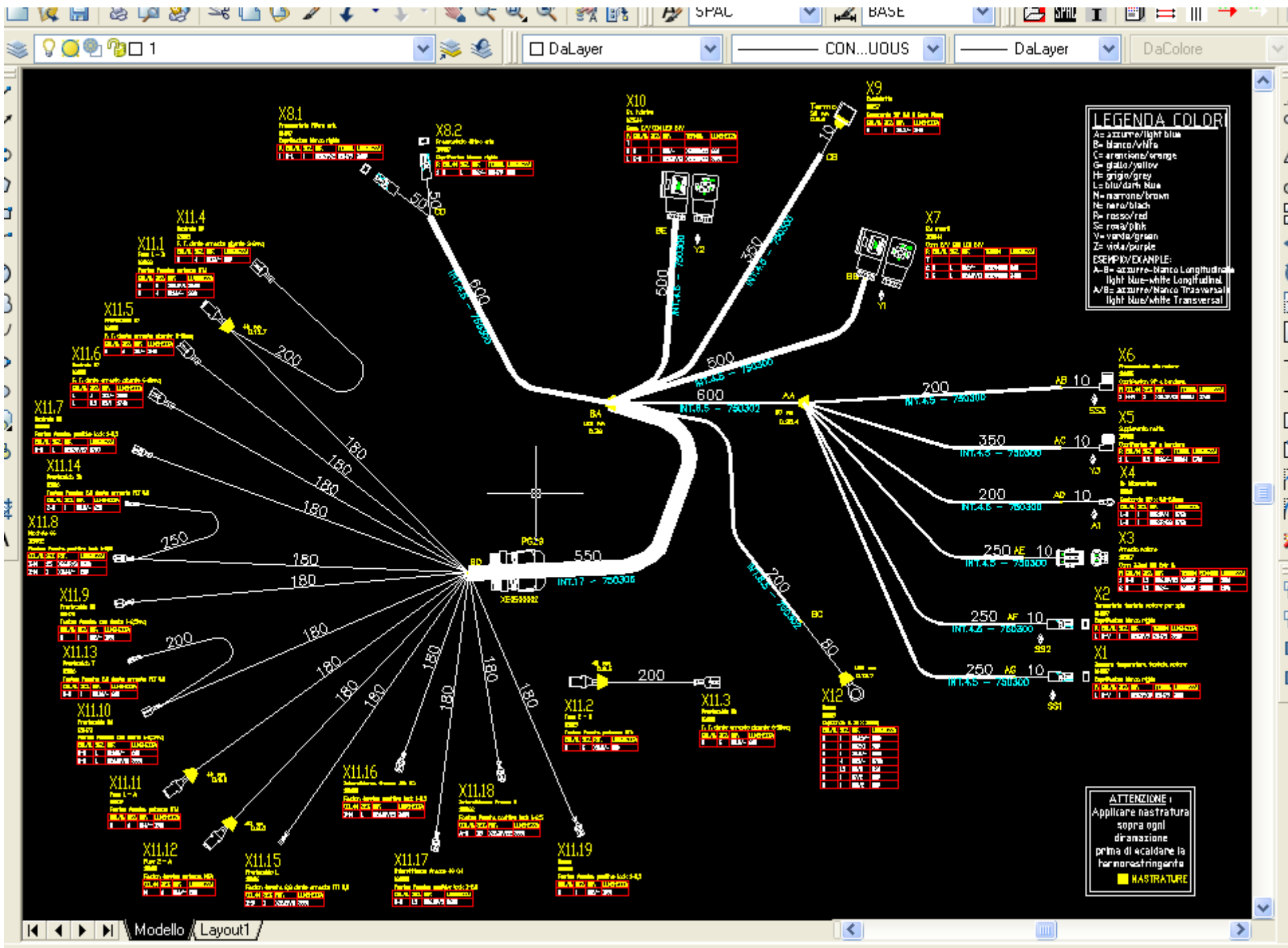
Codice	Descrizione	Q.tà	LM
DJR3VIE	Diramazione a 3 vie	1	pz.
SDP-0001	Cappucci 35x40x23 verde	3	pz.
SDP-0007	Passacavo verde ingresso frontale 2		pz.
SDP-0011	Passacavo M20 ingresso frontale 1		pz.
SDP-0100	Dimensione medio 2PE cartelli a vite 25W UN1		pz.
SDP-0110	Dimensione medio 2PE cartelli a vite 30W UN1		pz.
SDP-0200	Duplicato di scatola isolati M20 colore grigio 1		pz.
SDP-0212	Duplicato di scatola isolati M20 colore rosso 1		pz.
SDP-0400	Allettino inodile flessibile ad ultrasuoni 540		mm
SDP-0407	Guaina Isolanti termoresistenti 60		mm
SDP-0418	Tubo PVC 4	30	mm
SDP-0800	Energia e segnalamento	1000	mm
SDP-0806	Energia e segnalamento	630	mm
SDP-0808	Energia e segnalamento	120	mm
SDP-0812	Energia e segnalamento	370	mm
SDP-0813	Energia e segnalamento	370	mm
SDP-0814	Energia e segnalamento	250	mm
SDP-0818	Energia e segnalamento	250	mm
SDP-10002	Cartello medio placca argento 11x11		pz.

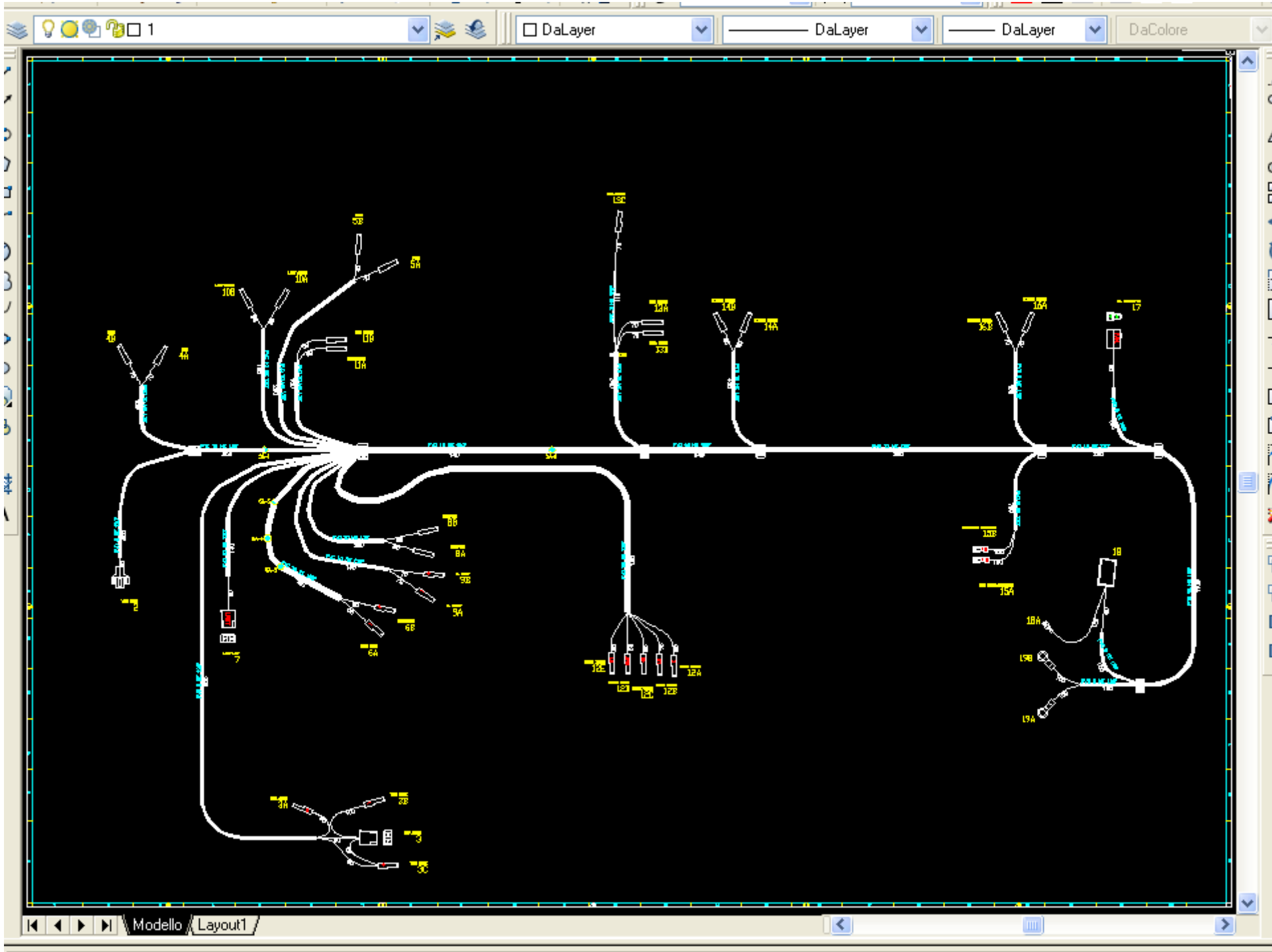
X2
Connettore

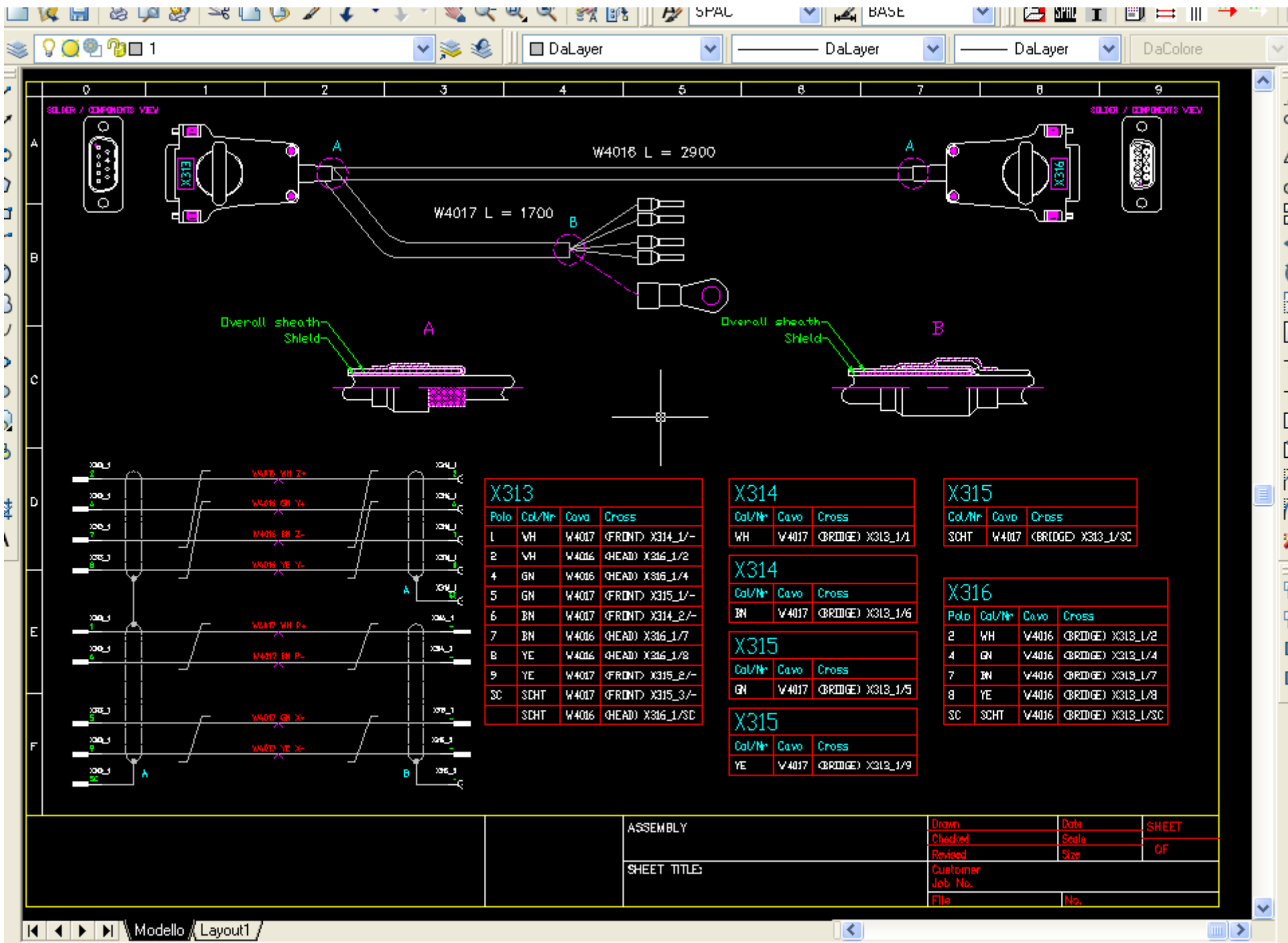
Polo	Col./Nr.	Sezione	Drass	Codice
1	G/V	1	XL/3	SDP-0812
2	G/V	1,5	XL/4	SDP-0813
3	G/V	2,5	SL/-	SDP-0814
4	R	1	SL/-	SDP-0818
5	A	1	XL/6	SDP-0800
6				
PE				

Fili poli 6 e 7 con ponticello e ripresa

	DATA								
	DISEGN.								
	VISTO								
MODIFICA	APPR.								







X313			
Polo	Col/Nr	Cavo	Cross
1	VH	W4017	(FRONT) X313_1/-
2	VH	W4016	(HEAD) X316_1/2
4	GN	W4016	(HEAD) X316_1/4
5	GN	W4017	(FRONT) X315_1/-
6	BN	W4017	(FRONT) X314_2/-
7	BN	W4016	(HEAD) X316_1/7
B	YE	W4016	(HEAD) X316_1/8
9	YE	W4017	(FRONT) X315_2/-
3C	SCHT	W4017	(FRONT) X315_3/-
	SCHT	W4016	(HEAD) X316_1/3C

X314		
Col/Nr	Cavo	Cross
WH	V4017	(BRIDGE) X313_1/1

X314		
Col/Nr	Cavo	Cross
BN	V4017	(BRIDGE) X313_1/6

X315		
Col/Nr	Cavo	Cross
GN	V4017	(BRIDGE) X313_1/5

X315		
Col/Nr	Cavo	Cross
YE	V4017	(BRIDGE) X313_1/9

X315		
Col/Nr	Cavo	Cross
SCHT	W4017	(BRIDGE) X313_1/3C

X316			
Polo	Col/Nr	Cavo	Cross
2	WH	V4016	(BRIDGE) X313_1/2
4	GN	V4016	(BRIDGE) X313_1/4
7	BN	V4016	(BRIDGE) X313_1/7
8	YE	V4016	(BRIDGE) X313_1/8
3C	SCHT	V4016	(BRIDGE) X313_1/3C

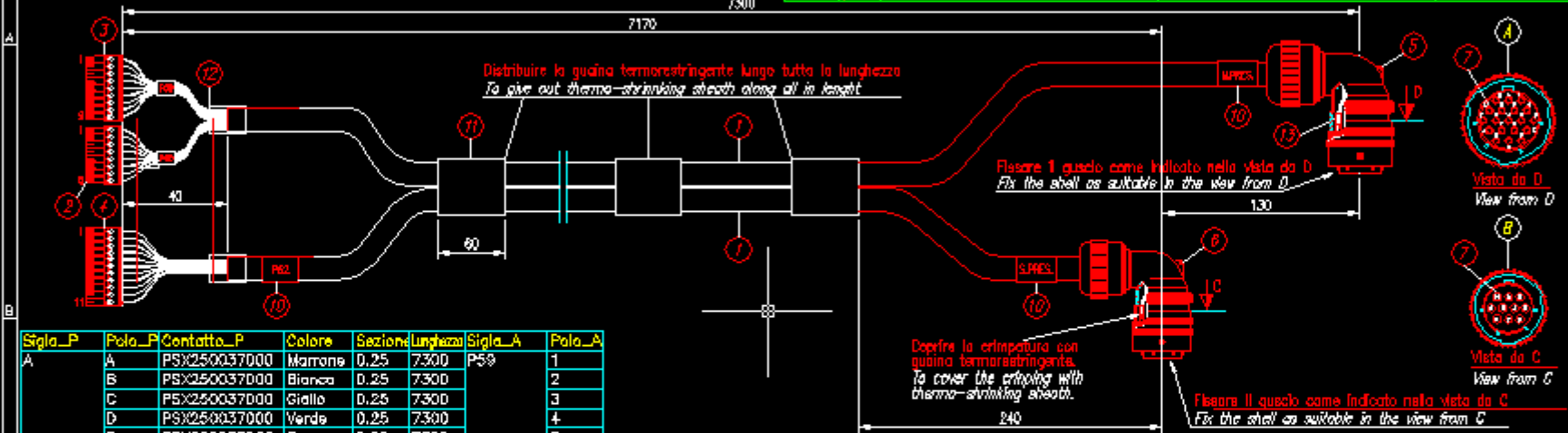
ASSEMBLY	Drawn	Date	SHEET
	Checked	Scale	OF
SHEET TITLE	Reviewed	Size	
	Customer Job No.		
	File	No.	

Comando:

P59				
Segnale	Colore	Polo	Guia	Chiusa
-HC1	Marrone	1	□	A/A
-HC2	Bianca	2	□	A/B
-HC3	Giallo	3	□	A/C
-HC4	Verde	4	□	A/D
-HC5	Rosa	5	□	A/E
-HC6	Grigio	6	□	A/F
-HC7	Rosso	7	□	A/B
-HC8	Blu	8	□	A/R
-SCH	Schermo	9	□	A/U

Saldare il filo con lo schermo sotto la guaina termorestringente. Verificare l'isolamento di 1500V tra schermo e fili.
Weld the wire with the shield under the thermo-shrinking sheath. Verify the isolation of 1500V between shield and wires.

Q.tà	UM	Descrizione	Description	Codice / Code
300	mm	Guaina restringente	Thermo-shrinking sheath	PRZ310120003
80	mm	Guaina restringente	Thermo-shrinking sheath	PRZ310120008
1020	mm	Guaina restringente	Thermo-shrinking sheath	PRZ310120010
14-470	mm	Cavo 8x2x0.25 mmq schermato	Cable 8x2x0.25 mmq shielded	PSQ241035018
1	pz	Connettore femmina 8 vie	Female connector 8 ways	PSQ251077008
1	pz	Connettore femmina 9 vie	Female connector 9 ways	PSQ251077009
1	pz	Connettore femmina 11 vie	Female connector 11 ways	PSQ251077011
1	pz	Connettore circolare 90° 12-10S	Circular connector 90° 12-10S	PSQ251126000
1	pz	Connettore circolare 90° 14-19S	Circular connector 90° 14-19S	PSQ251126000
3	pz	Siglacavo adesivo	Adhesive cable marker	PSQ551132004
27	pz	Contatto femmina WPR-CR	Contact female VPT-CR	PSX250037000



Segla_P	Polo_P	Contatto_P	Colore	Sezione	Lunghezza	Segla_A	Polo_A
A	A	PSX250037000	Marrone	0.25	7300	P59	1
B	B	PSX250037000	Bianca	0.25	7300		2
C	C	PSX250037000	Giallo	0.25	7300		3
D	D	PSX250037000	Verde	0.25	7300		4
E	E	PSX250037000	Rosa	0.25	7300		5
F	F	PSX250037000	Grigio	0.25	7300		6
G	G	PSX250037000	Rosso	0.25	7300		7
H	H	PSX250037000	Blu	0.25	7300		8
U	U	PSX250037000	Schermo	0.25	7300		9
J	J	PSX250037000	Viola	0.25	7300	P60	1
K	K	PSX250037000	Nero	0.25	7300		2
L	L	PSX250037000	Rosso/Blu	0.25	7300		3
M	M	PSX250037000	Grigio/Rosa	0.25	7300		4
N	N	PSX250037000	Marrone/Verde	0.25	7300		5
P	P	PSX250037000	Bianco/Verde	0.25	7300		6
R	R	PSX250037000	Giallo/Marrone	0.25	7300		7
S	S	PSX250037000	Bianco/Giallo	0.25	7300		8
A	A	PSX250037000	Bianco	0.25	7170	P62	1
B	B	PSX250037000	Marrone	0.25	7170		2
C	C	PSX250037000	Verde	0.25	7170		3
D	D	PSX250037000	Giallo	0.25	7170		4
E	E	PSX250037000	Grigio	0.25	7170		5
F	F	PSX250037000	Rosa	0.25	7170		6
G	G	PSX250037000	Blu	0.25	7170		7
H	H	PSX250037000	Rosso	0.25	7170		8
J	J	PSX250037000	Giallo/Marrone	0.25	7170		9
K	K	PSX250037000	Bianco/Giallo	0.25	7170		10

P60				
Segnale	Colore	Polo	Guia	Chiusa
-HC1	Viola	1	□	A/J
-HC2	Nero	2	□	A/K
-HC3	Rosso/Blu	3	□	A/L
-HC4	Grigio/Rosa	4	□	A/M
-HC5	Marrone/Verde	5	□	A/N
-HC6	Bianco/Verde	6	□	A/P
-HC7	Giallo/Marrone	7	□	A/R
-HC8	Bianco/Giallo	8	□	A/S

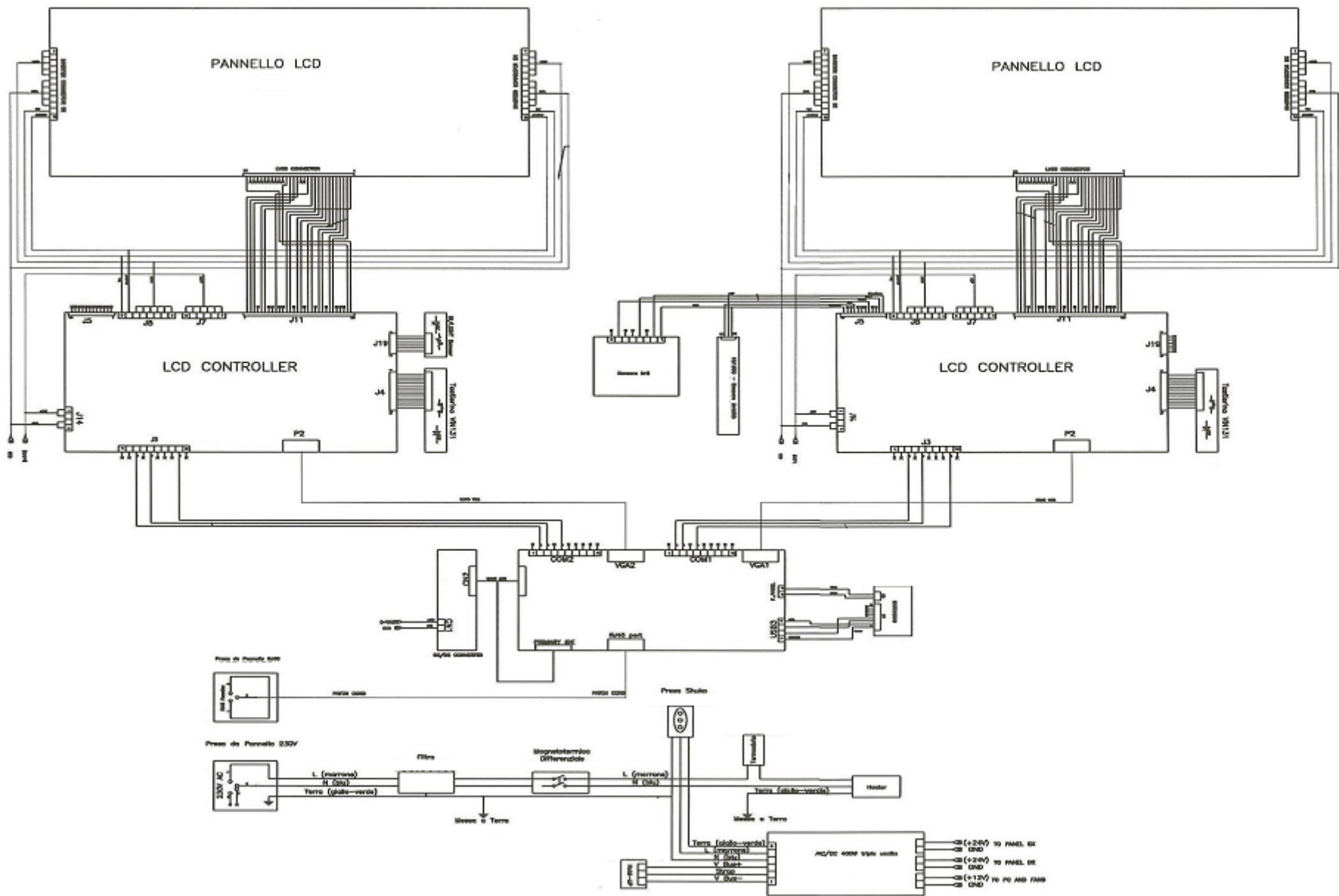
P62				
Segnale	Colore	Polo	Guia	Chiusa
-HC1	Bianco	1	□	A/A
-HC2	Marrone	2	□	A/B
-HC3	Verde	3	□	A/C
-HC4	Giallo	4	□	A/D
-HC5	Grigio	5	□	A/E
-HC6	Rosa	6	□	A/F
-HC7	Blu	7	□	A/G
-HC8	Rosso	8	□	A/H
-HC9	Giallo/Marrone	9	□	A/J
-HC10	Bianco/Giallo	10	□	A/K
-SCH	Schermo	11	□	A/U

A				
Segnale	Colore	Polo	Guia	Chiusa
-HC1	Marrone	A	□	PS6/1
-HC2	Bianca	B	□	PS6/2
-HC3	Giallo	C	□	PS6/3
-HC4	Verde	D	□	PS6/4
-HC5	Rosa	E	□	PS6/5
-HC6	Grigio	F	□	PS6/6
-HC7	Blu	G	□	PS6/7
-HC8	Rosso	H	□	PS6/8
-HC9	Giallo/Marrone	I	□	PS6/9
-HC10	Bianco/Giallo	J	□	PS6/10
-HC11	Schermo	K	□	PS6/11




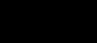


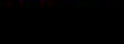





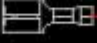


B				
Segnale	Colore	Polo	Guia	Chiusa
-HC1	Bianca	A	□	PS6/1
-HC2	Marrone	B	□	PS6/2
-HC3	Verde	C	□	PS6/3
-HC4	Giallo	D	□	PS6/4
-HC5	Grigio	E	□	PS6/5
-HC6	Rosa	F	□	PS6/6
-HC7	Blu	G	□	PS6/7
-HC8	Rosso	H	□	PS6/8
-HC9	Giallo/Marrone	I	□	PS6/9
-HC10	Bianco/Giallo	J	□	PS6/10
-HC11	Schermo	K	□	PS6/11

Togliere ed isolare i fili non utilizzati.
Cut and isolate the wires not used.

Tutte le quote sono espresse in millimetri.
All the dimensions are in millimeters.



SCHEDA DI TAGLIO

PARTENZA							ARRIVO		
SPELL.	CONTATTO	MARCATURA	PROGRESSIVO	CAVO	LUNGHEZZA	MARCATURA	CONTATTO	SPELL.	
7	SDP-10002	 X10/1	1		395	X11/1		SDP-10002	7
7	SDP-10002	 X10/3	1		395	X11/1			
		X10/3	1		440	T5/-		SDP-0231	0
0	SDP-10002	 X11/6	1		50	T5/-			
		X11/6	1	Cl	395	X10/7		SDP-10002	7
7	SDP-10002	 X10/4	2		395	X11/3		SDP-10002	7
7	SDP-10002	 X10/5	1	Cl	395	X11/4		SDP-10002	7
7	SDP-10002	 X10/6	3		295	T1/-		SDP-0200	0
0		X11/PE	4		5	X11/7		SDP-10002	7